

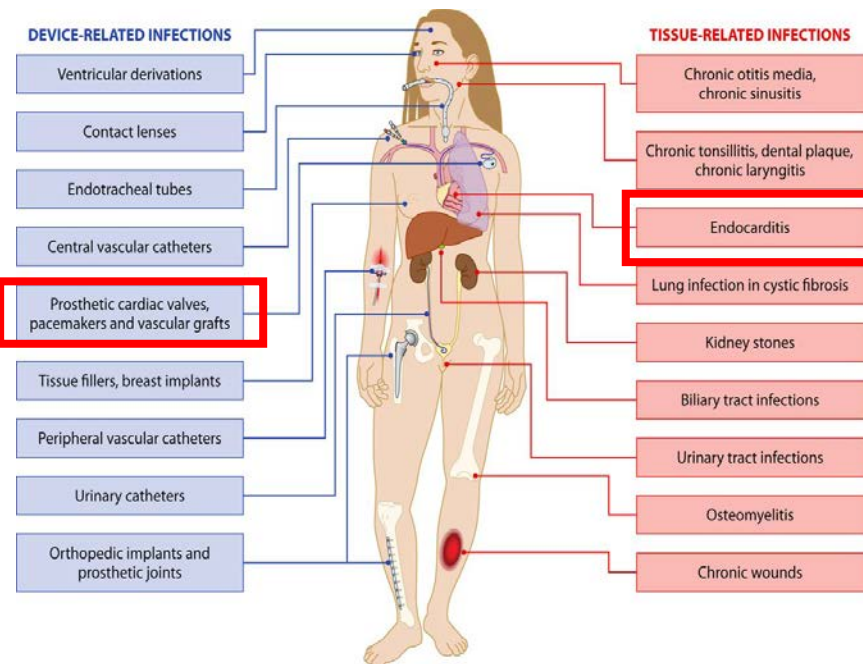
S08 - Lag phase in bacteria directly derived from patients - implications for therapy in IE

Annelies.Zinkernagel@usz.ch

**Division of Infectious Diseases & Hospital Epidemiology, University Hospital Zurich
University of Zurich, Switzerland**

Nothing to disclose
No COI

Staphylococcus ssp. Endocarditis



Antibiotics: Long treatment duration, i.v.

- How long is long enough?

- Endocarditis: >4 weeks

- 1943: Mortality 100% -now with antibiotics 30%

Surgery: Scars- morbidity -mortality

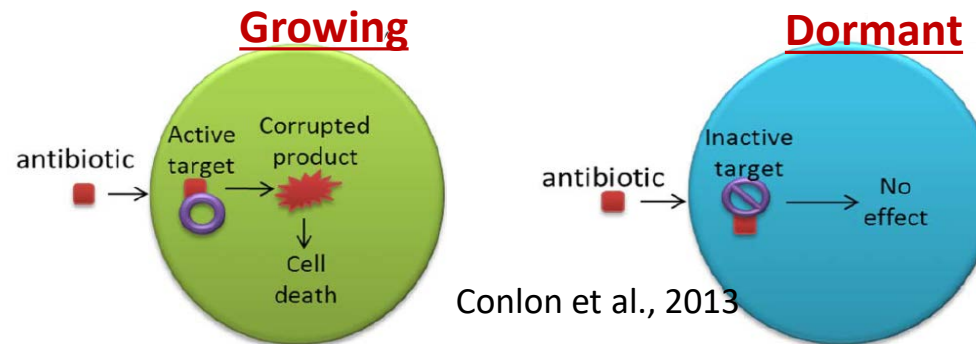
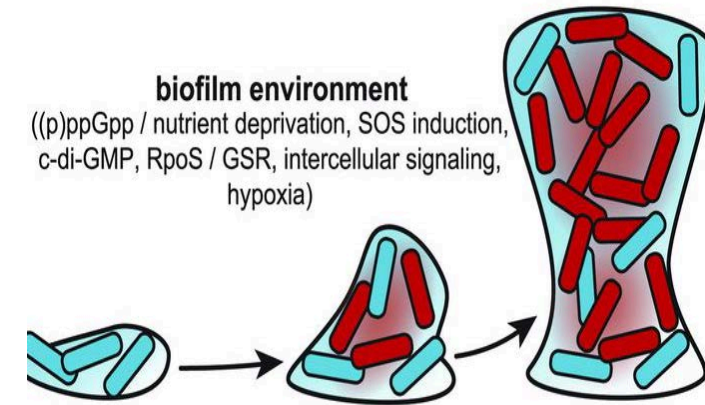
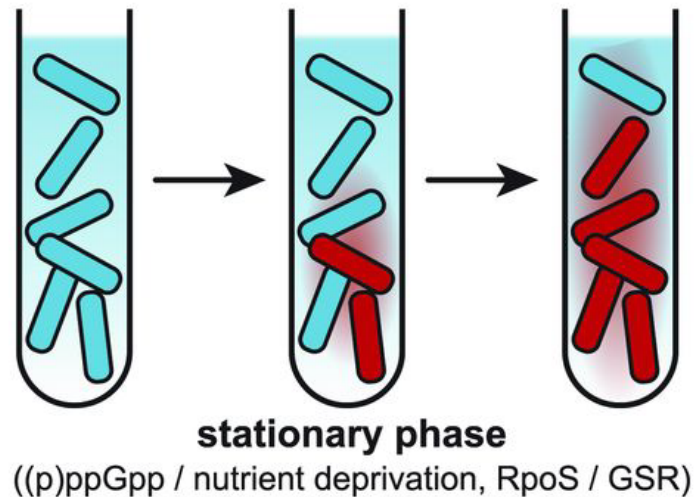
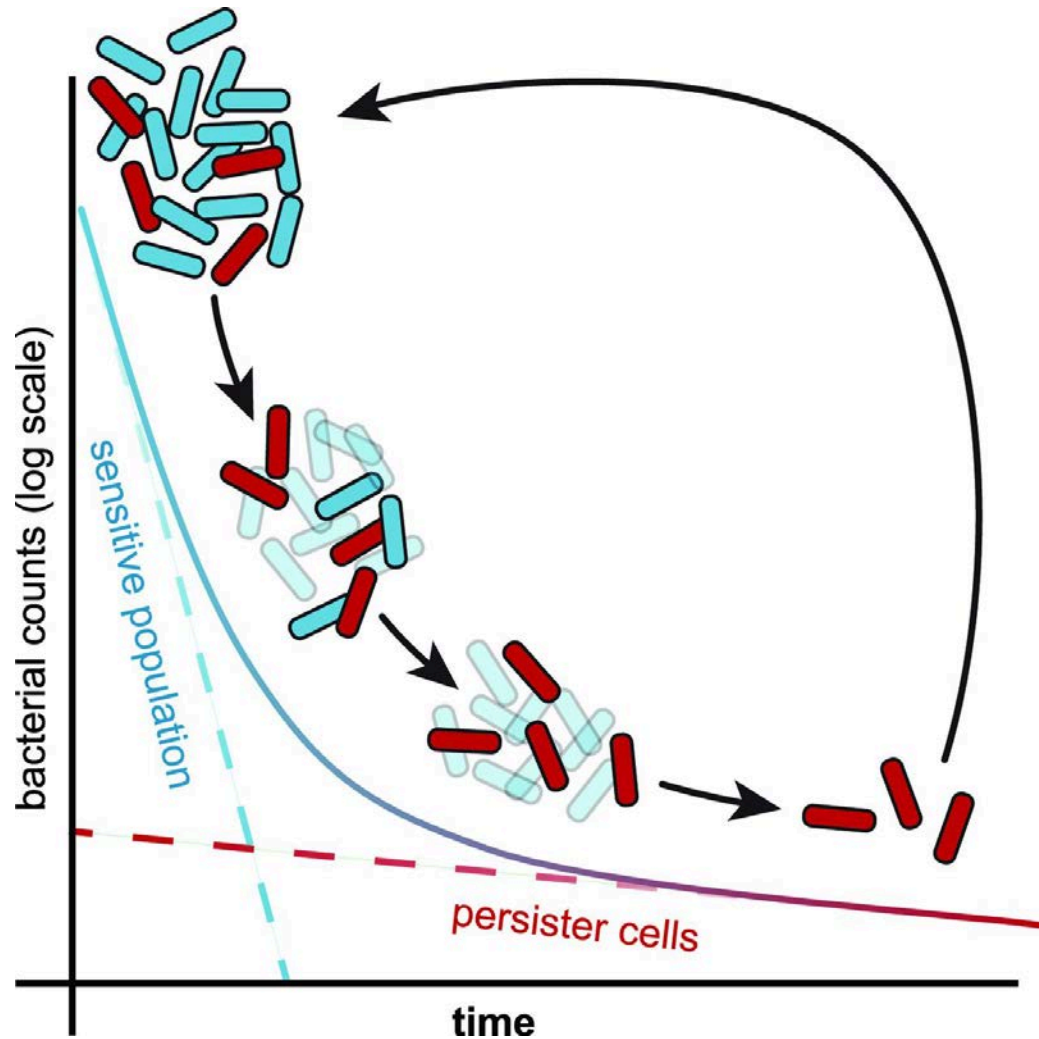
- Removal of infected tissue -foreign body

» Therapy of *Staphylococcus aureus* Bacteremia

Associated with a Removable Focus of Infection,

PAUL B. IANNINI, M.D.; KENT CROSSLEY, M.D. 1976

Persisters = metabolically inactive bacteria

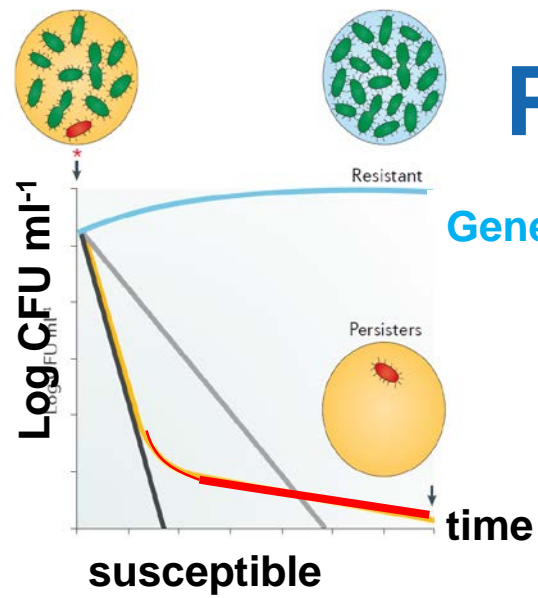


E.coli, *Tbc*, *S.aureus*, *Salmonella* ssp.

Stressors: reactive oxygen species (ROS), lack in nutrients, low pH, antibiotics

Biphasic killing kinetics of bactericidal antibiotic treatment.

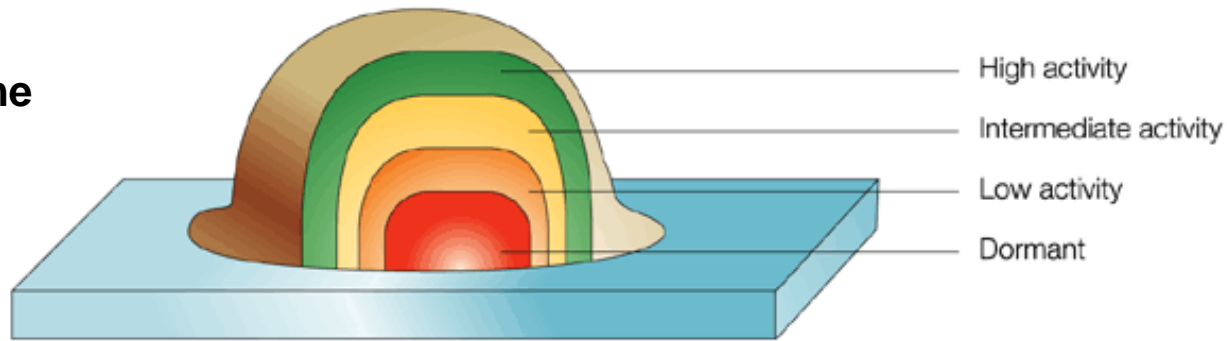
Persisters = metabolically inactive bacteria



Genetic Resistant

Phenotypic Resistance

Persistenz, Toleranz



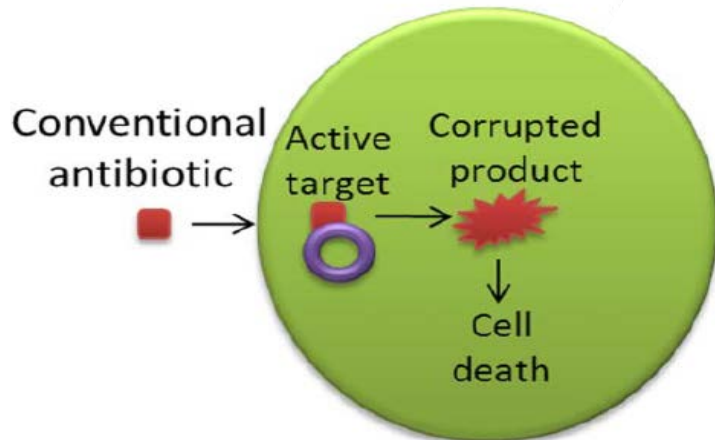
Natural Resistance

outer Membrane Gram-

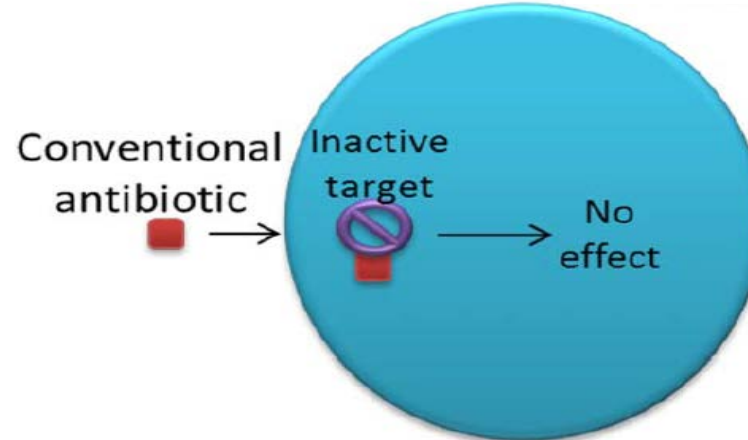
Genetic Resistance

Mutations
Effluxpumps upregulated
Modified enzymes

Growing

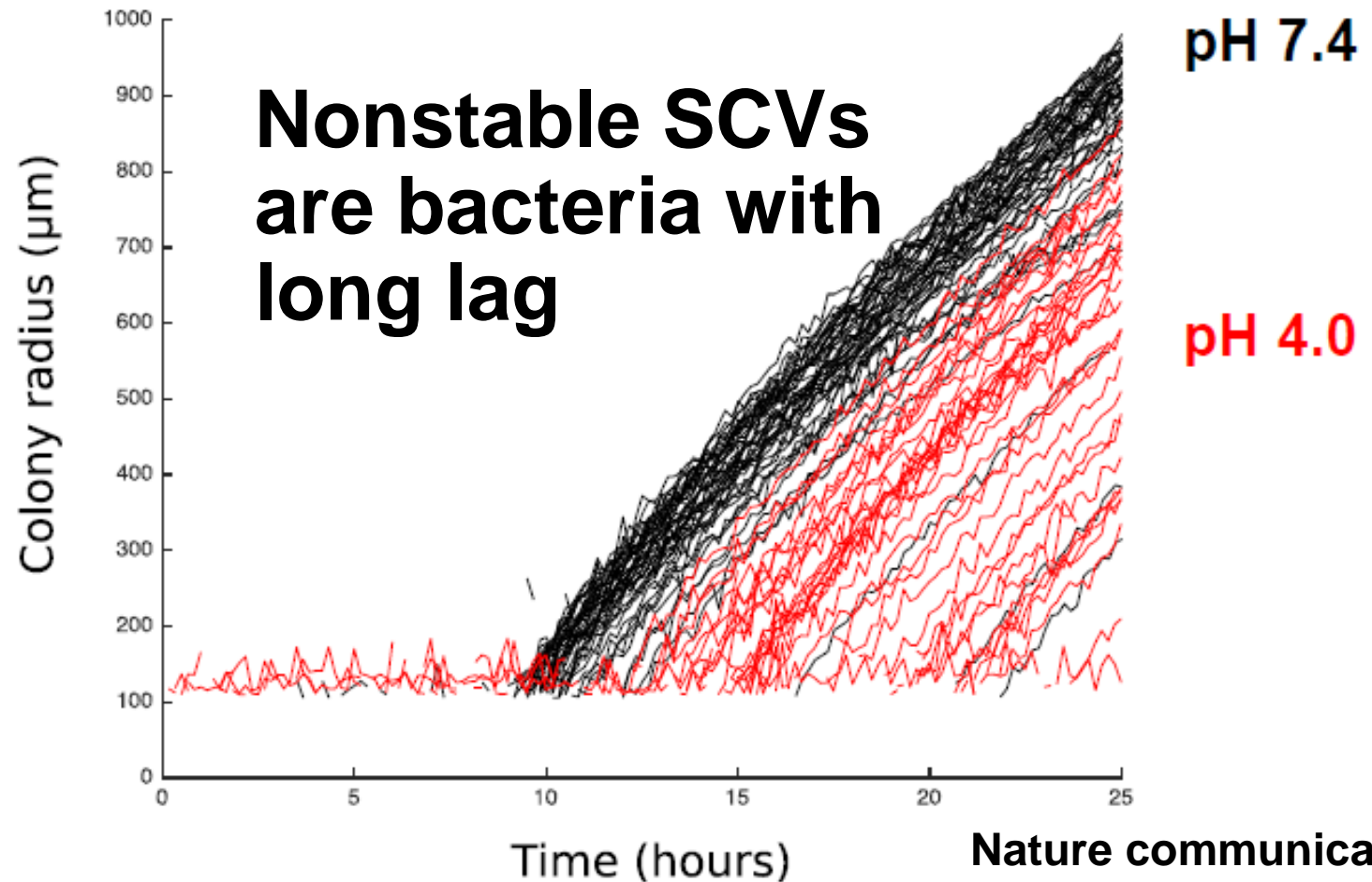
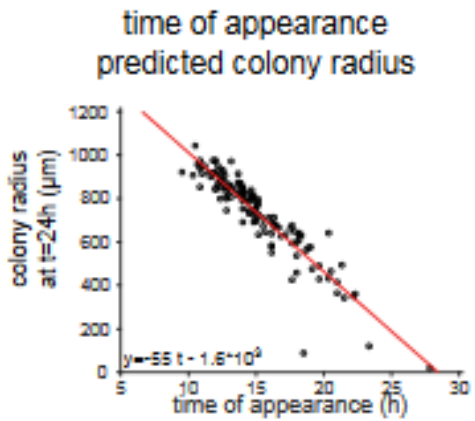
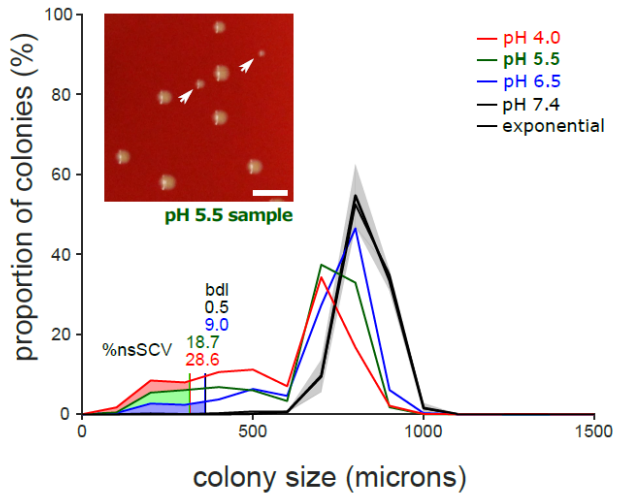
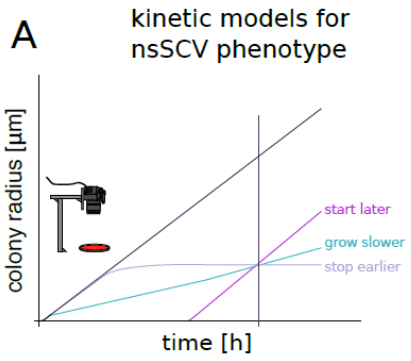


Dormant



Growth – No Growth

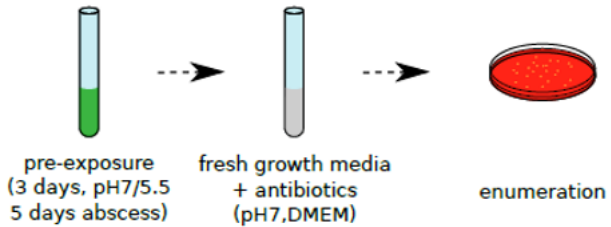
SCV formation is a consequence of a late emergence of colonies



Non dividing bacteria withstand antibiotics

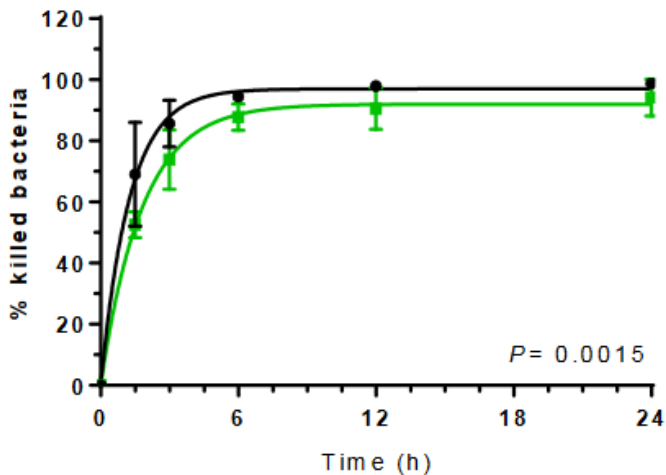
Tolerance by growth

persister assay

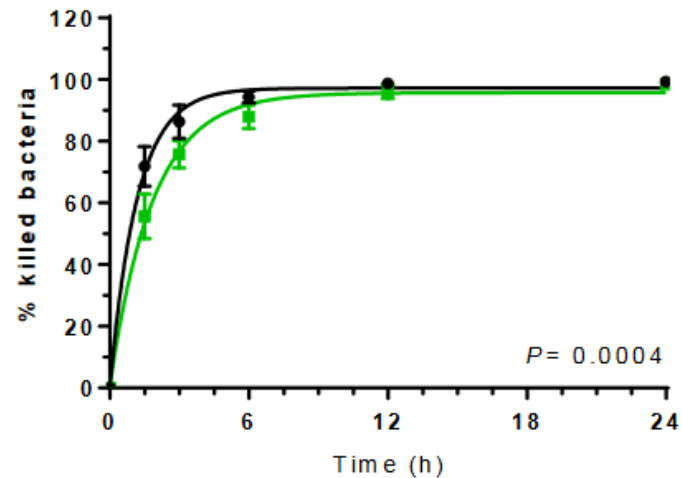


S. aureus from
pH 5.5
pH 7.4

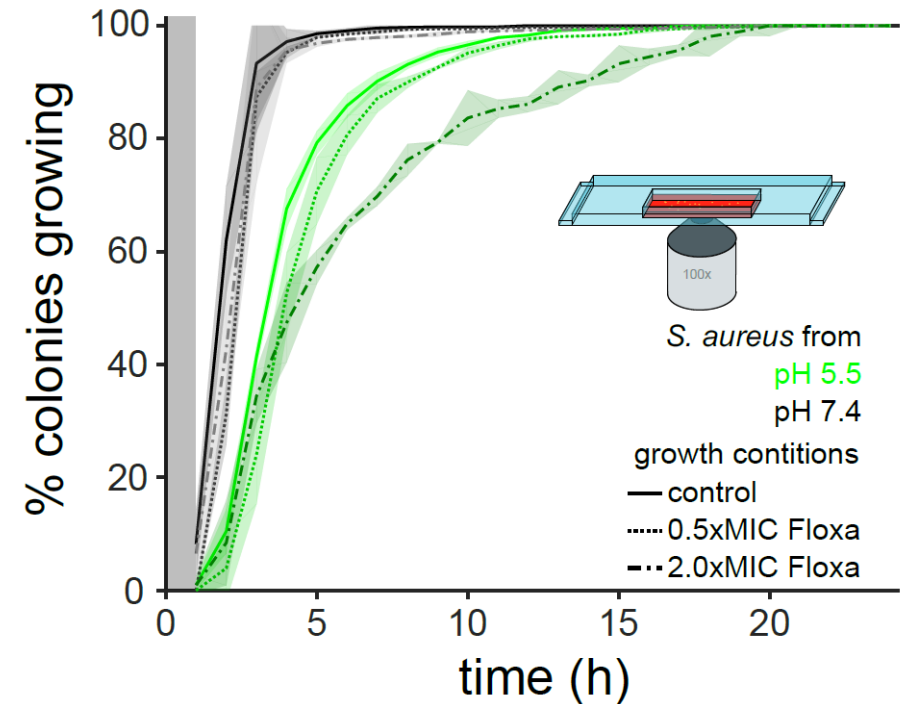
Flucloxacillin 10xMIC



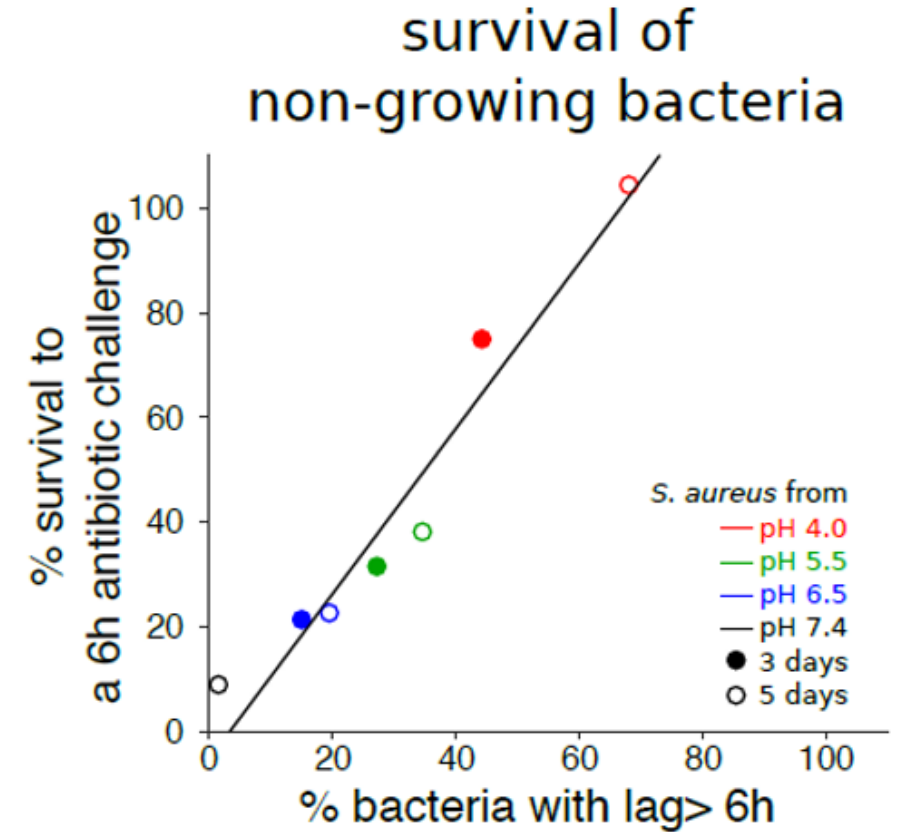
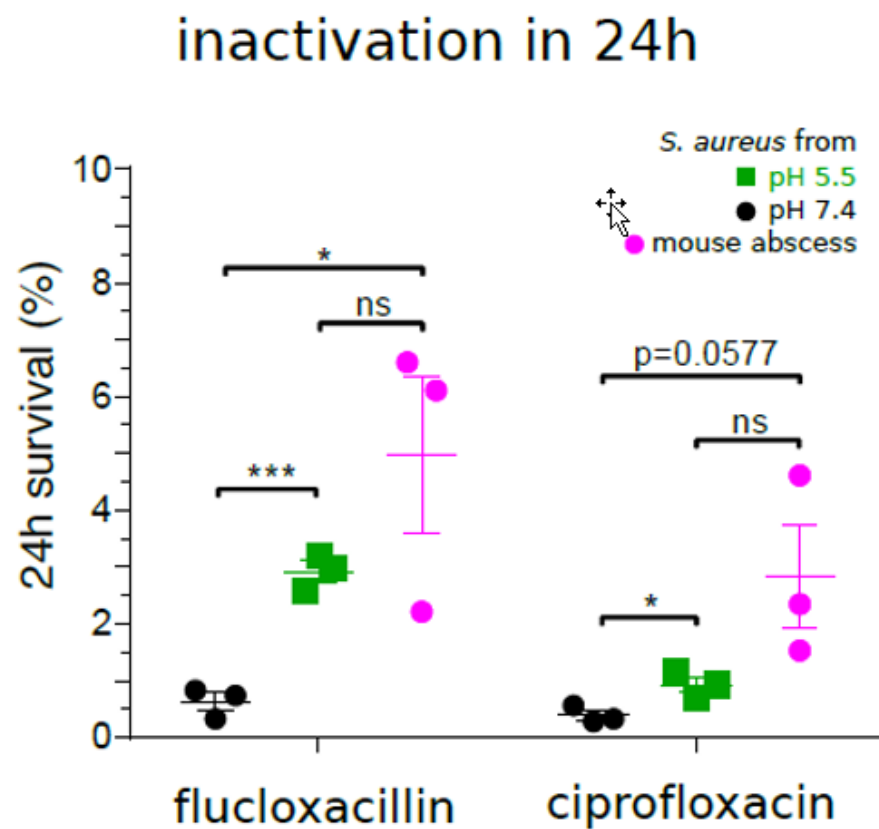
Ciprofloxacin 10xMIC



single cells' first divisions from liquid culture



The proportion of bacteria in lag phase correlates with the proportion of bacteria surviving antibiotics



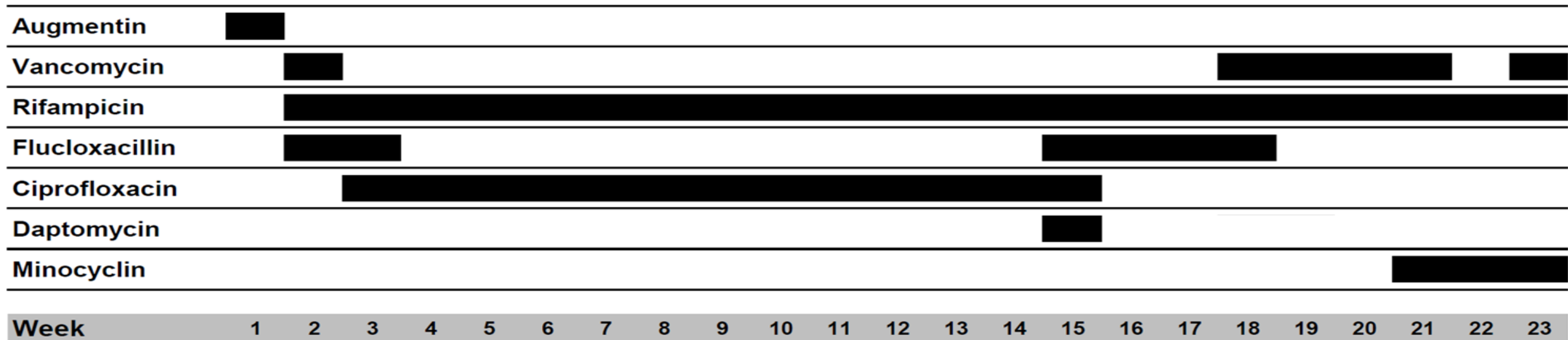
ARTICLE

DOI: 10.1038/s41467-018-06527-0

OPEN

Prolonged bacterial lag time results in small colony variants that represent a sub-population of persisters

Staphylococcus epidermidis pacemaker associated endocarditis

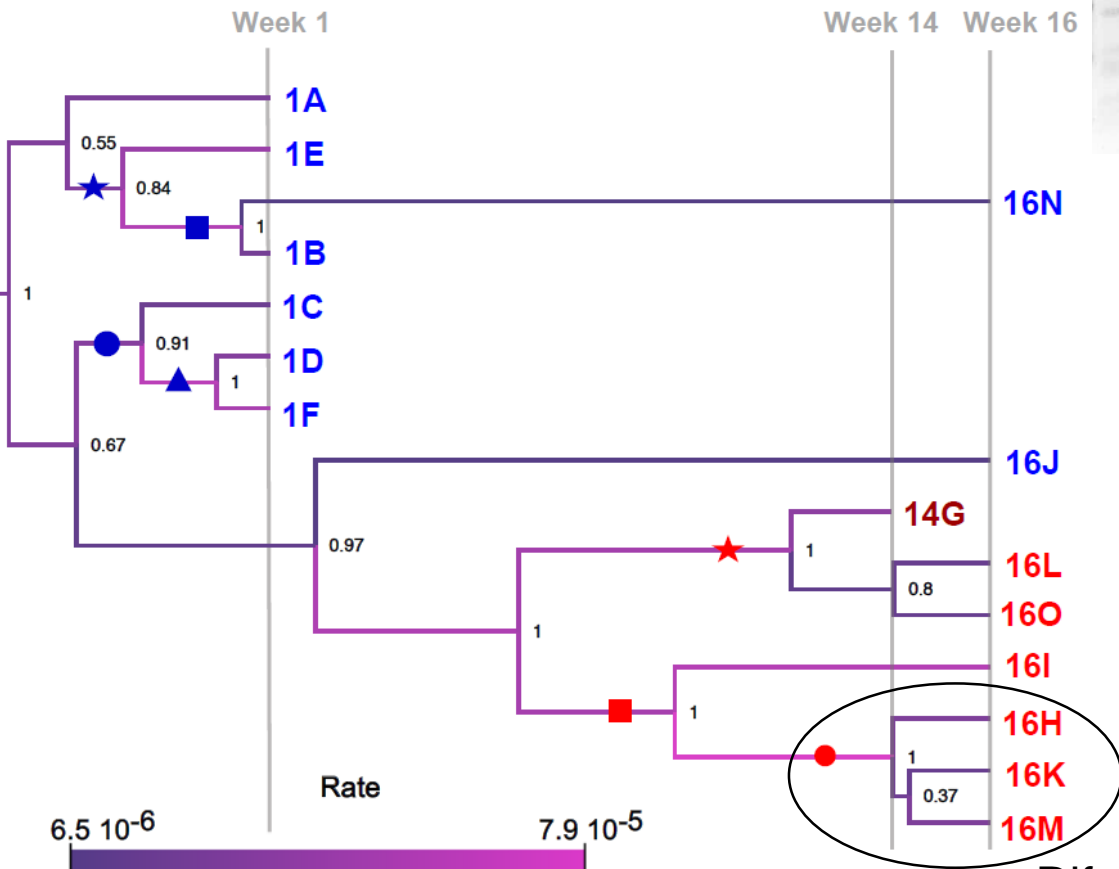
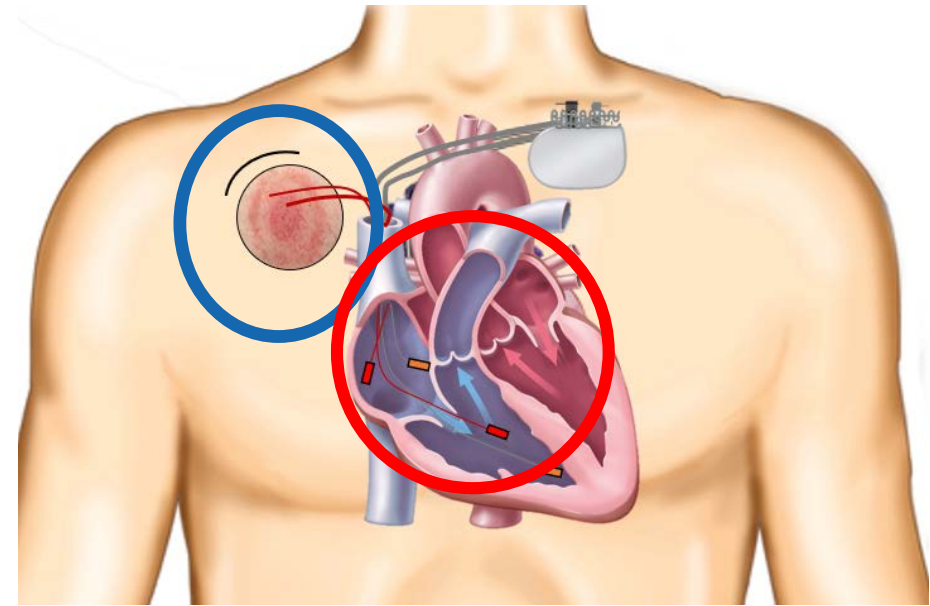
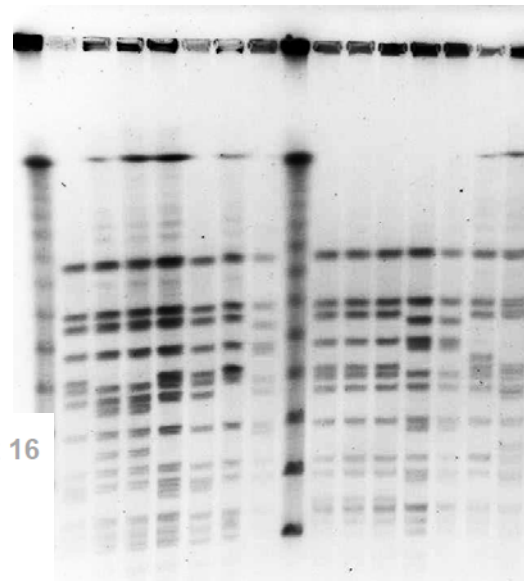


↑
Pacemaker pocket infection in 40 year old male, debridement of the pacemaker pocket, vacuum assisted closure therapy (VAC), antibiotics

↑
Bacteremia, vegetation in echocardiography

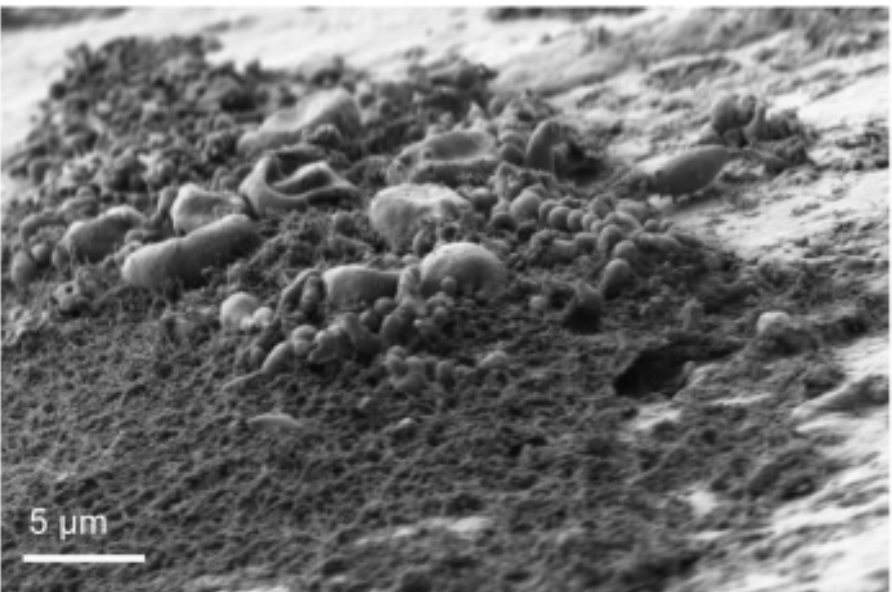
↑
Explantation of pacemaker
The 'Endocarditis Team'

Phylogenetic tree of the clinical *S. epidermidis* isolates

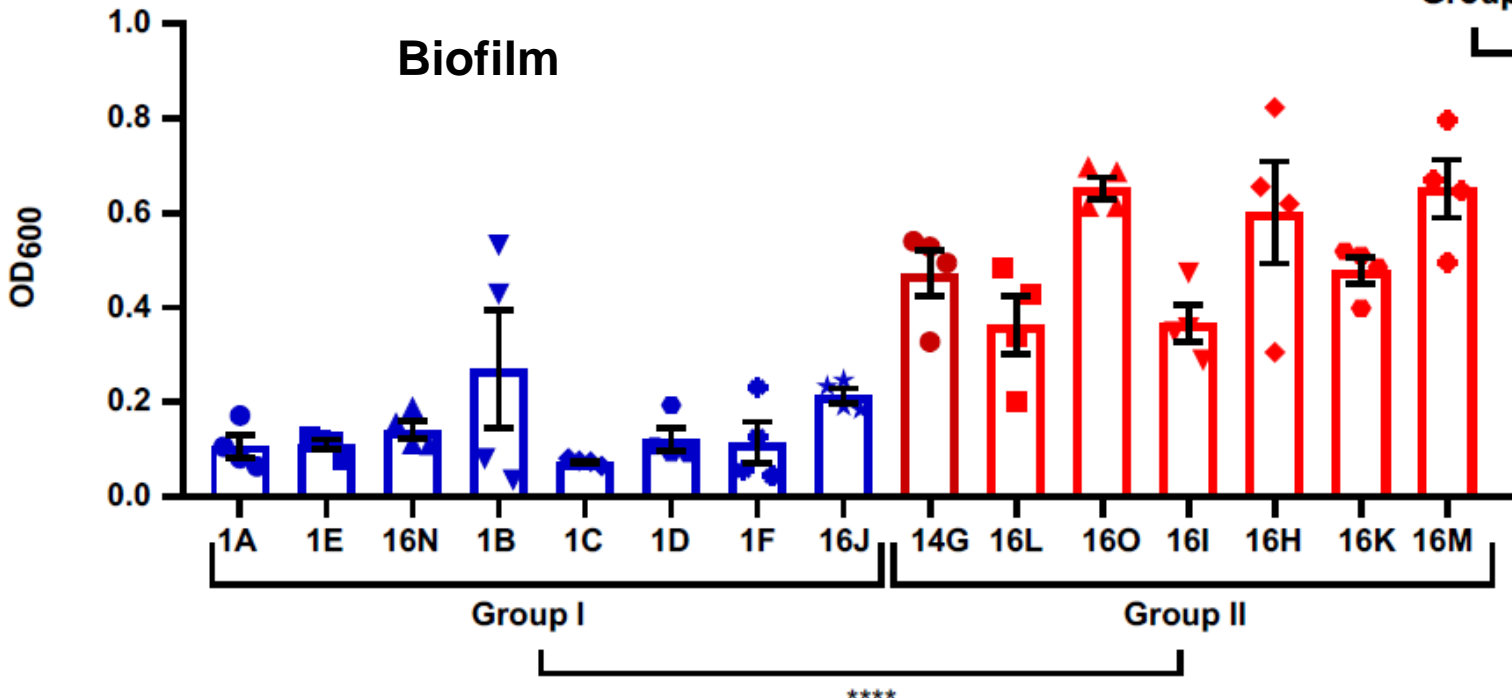
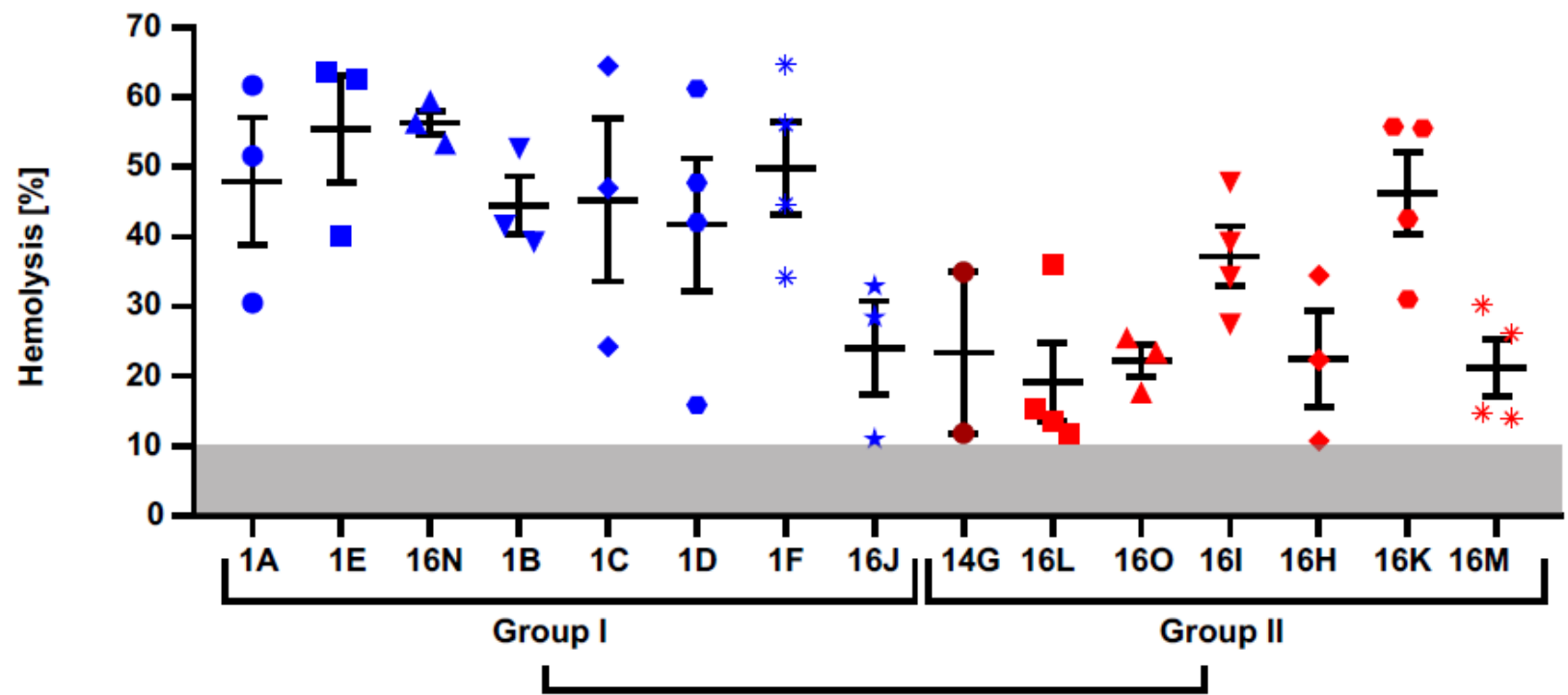


Rifampicin resistant clinical isolates

Bacterial isolate	Isolation week	Laboratory internal CI number	Isolation origin	Pacemaker area	Sequence Type
1A	1	835	Wound extraction of PM pocket	Old	378
1B	1	836	Wound extraction of PM pocket	Old	378
1C	1	837	Tissue	Old	378
1D	1	838	Tissue	Old	378
1E	1	839	Electrode	Old	378
1F	1	841	Electrode	Old	378
14G	14	753	Blood	-	378
16H	16	842	n.d	New	378
16I	16	848	Aggregate	New	378
16J	16	849	Aggregate	New	378
16K	16	788	Ventricle electrode	New	378
16L	16	792	Atrial electrode	New	378
16L	16	792	Atrial electrode	New	378
16M	16	797	Ventricle electrode	New	378



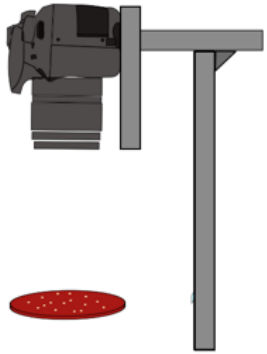
Scanning Electron Microscopy



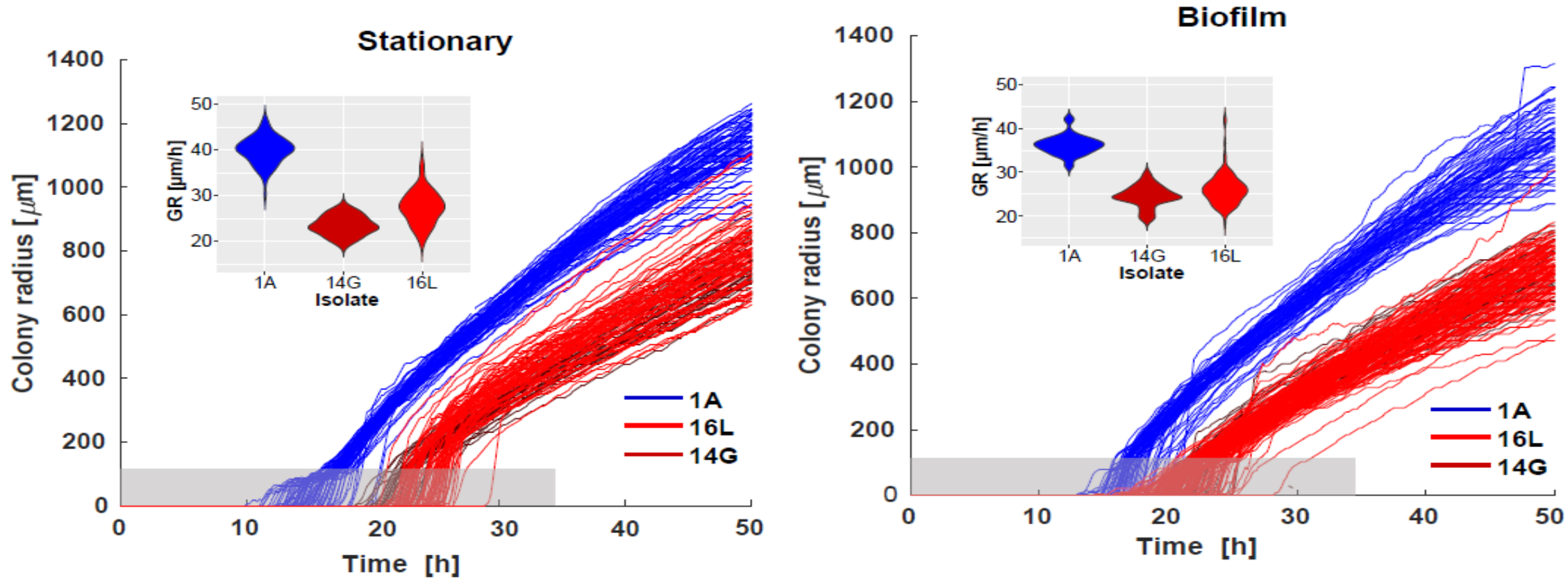
Nature communications 2019

Late isolates show reduced growth rate and increased lag time

Colony time lapse

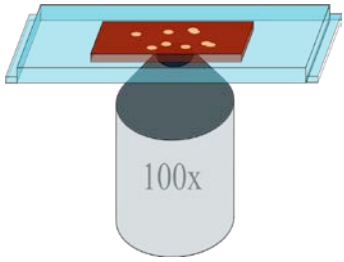


Vulin et al. 2018, Nat. Commun.



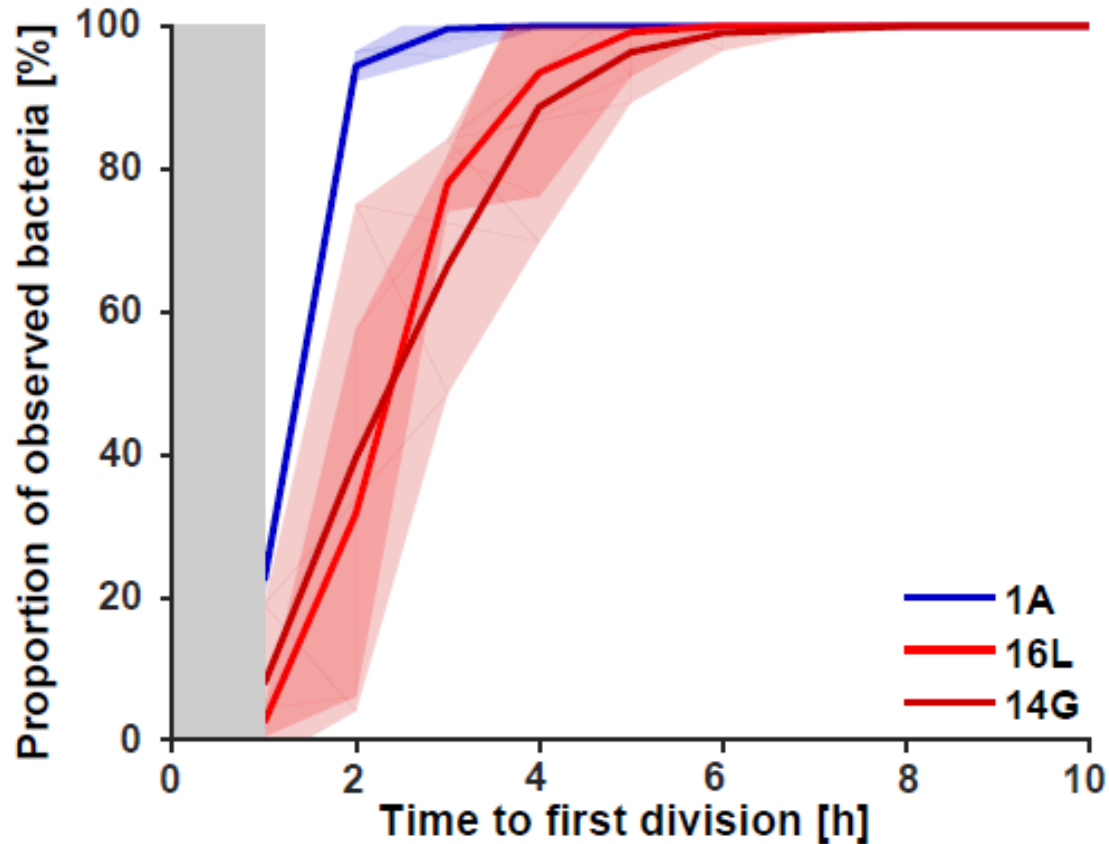
Appearance of colonies on blood agar plates

Single-cell time lapse



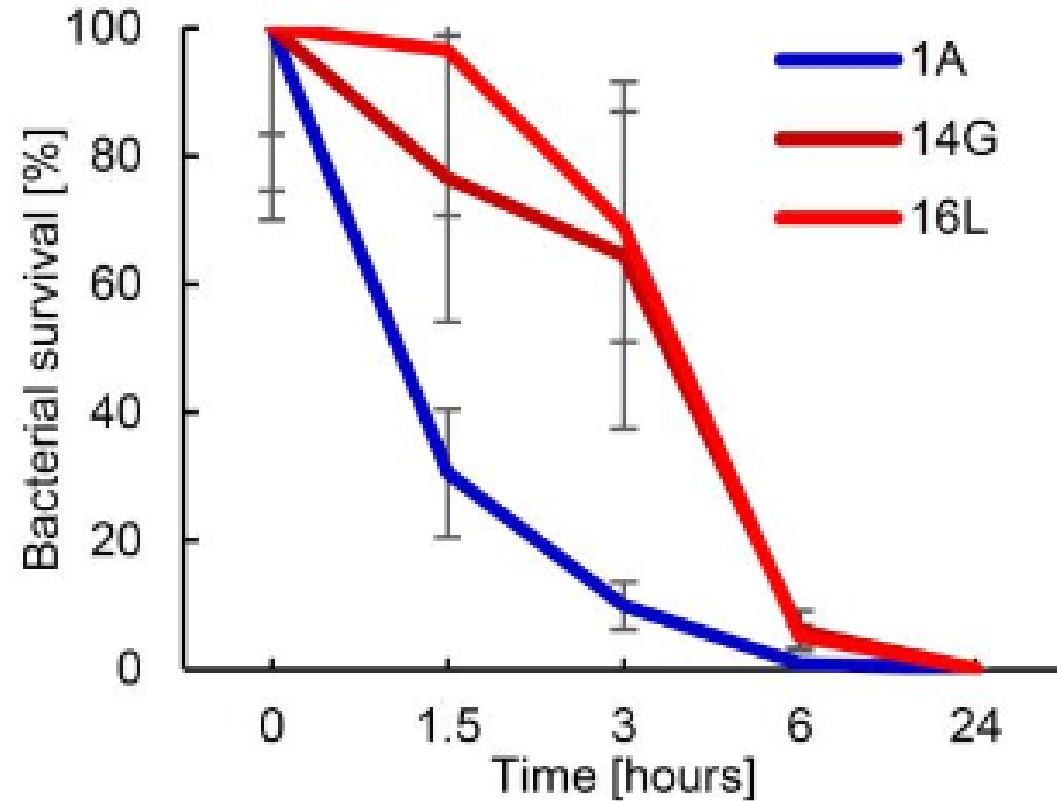
Vulin et al. 2018,
Nat. Commun.

Late isolates show increased lag time of single cells' first division

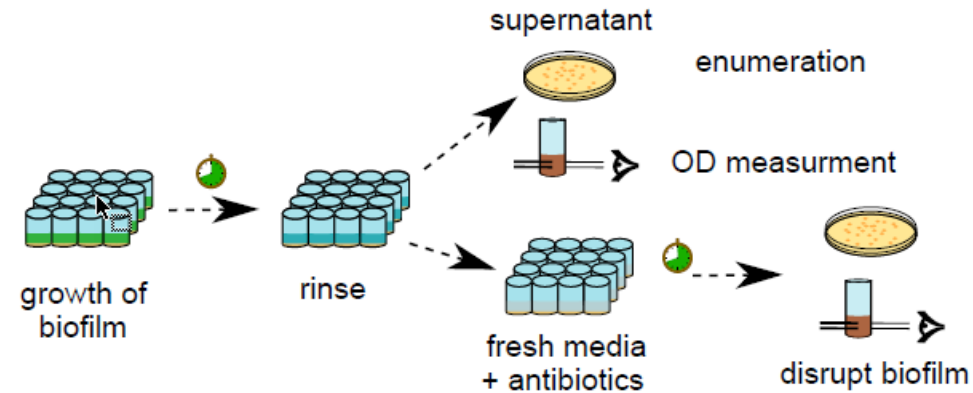


First division of a single bacterial cell

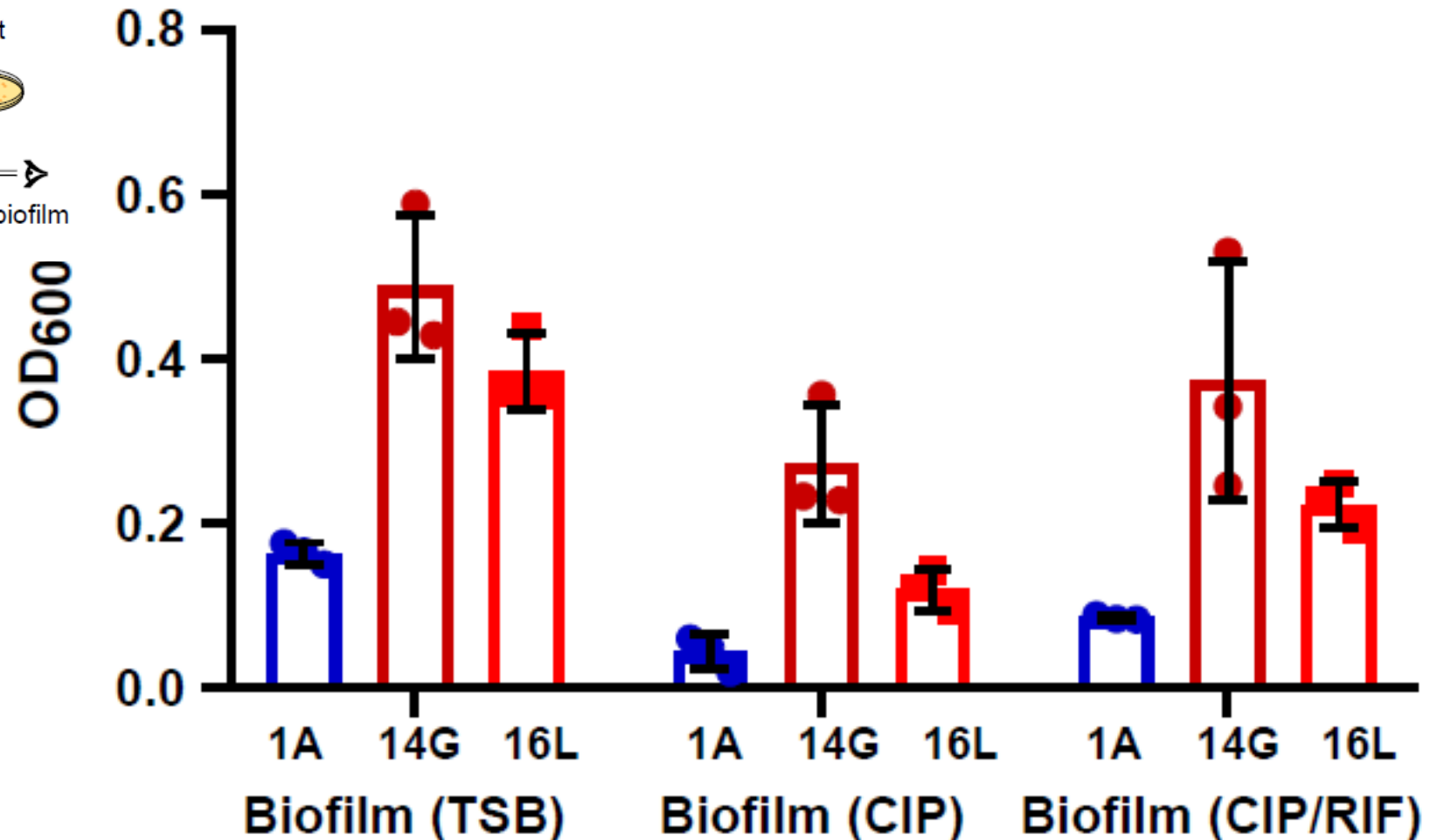
Ciprofloxacin MIC 40 x
time kill curves



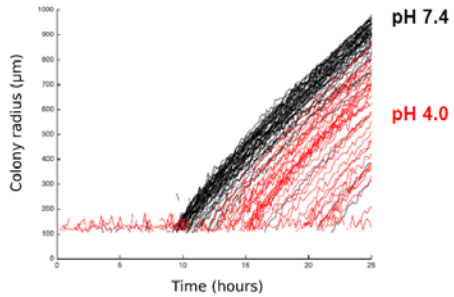
Late isolates show thicker biofilm after ciprofloxacin and rifampicin exposure



Biofilm thickness



Lag phase in bacteria directly derived from patients - implications for therapy in IE



- **Staphylococcus ssp. endocarditis**

- Surgery crucial

The 'Endocarditis Team'

- Long antibiotic treatments

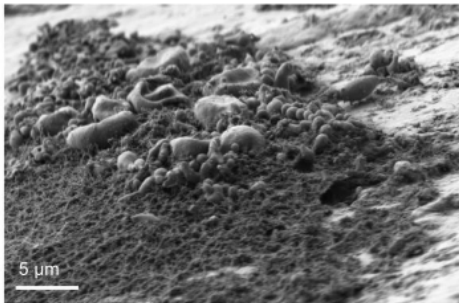
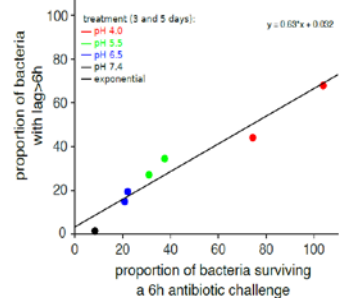
- Heterogenous population

- **Prolonged bacterial lag time results in SCV that represent a sub-population of persisters**

- The proportion of bacteria in lag phase correlates with the proportion of bacteria surviving antibiotics

- ***S.epidermidis*** in host evolution

survival of non-growing bacteria



Many thanks



Herzzentrum Zurich (**C.Mestres**, M. Frank)
Klinik für Infektionskrankheiten & Spitalhygiene



Barbara Hasse
Silvio Brugger
Nadia Eberhardt
Caroline Müller
Selvete Bajrami
Sebastian Herren
Kim Röthlin
Christine Laich
Roger Kouyos
Denise Kühner

**KFSP –BacVivo –
Precision medicine for
bacterial infections**



Federica Andreoni
Nadia Keller
Andrea Tarnutzer
Markus Huemner
Nicola Häffner
Vanina Hauenreiter Dengler
Yvonne Achermann
Mathilde Boumassmoud
Carmen Menzi
Tiziano Schweizer
Srikanth Mairpady Shambat
Kati Seidl
Dennis Wipfli
Sandra Götschi
Nadja Leimer
Carol Rachmühl
Miguel Palheiros Marques
Sandro Pereira
Milton Meerwein
Michèle Leemann
Satoshi Uchiyama
Claudia Zürcher
Katrin Schilcher
Rey Gaffner

→ collaborations with
Prof. A. Moter, Charite Berlin
Prof. M. Ackermann and
C. Vulin, PhD, Eawag/ETH



Unil
UNIL | Université de Lausanne

15th Symposium

of the International Society of Cardiovascular Infectious Diseases

Lausanne, Switzerland

June 2 - 4, 2019

Lausanne-Veveyland-Terraces, UNESCO World Heritage